

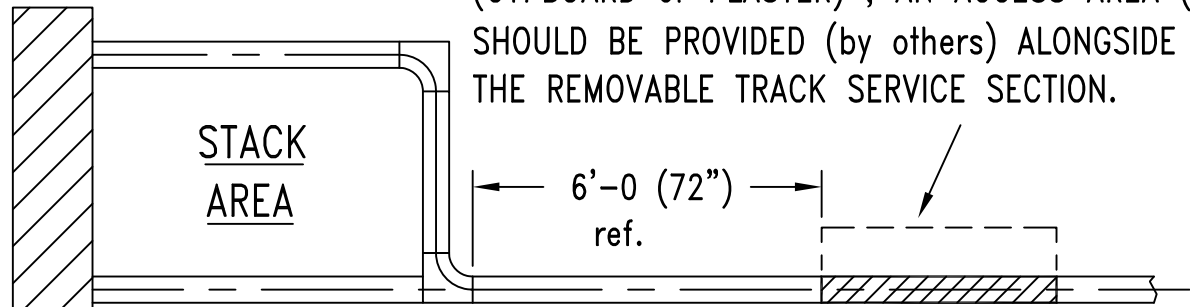
NOTE: IF TRACK IS INSTALLED IN A "HARD" CEILING (GYPBOARD or PLASTER), AN ACCESS AREA (1' x 4') SHOULD BE PROVIDED (by others) ALONGSIDE THE REMOVABLE TRACK SERVICE SECTION.

PANELFOLD

P.O. BOX # 683130 MIAMI, FL. 33168
TEL. # (305) 688-3501 FAX # (305) 688-0185

48" REMOVABLE TRACK SECTION TYPE 7 or 8 for INDIVIDUAL PANELS

ITEM	PART #	DESCRIPTION	QTY.
1	23324	48" REMOVABLE TRACK SECTION (specify type 7 or 8)	1
2	3371 or 3365	TRACK TYPE 7 or TRACK TYPE 8	—
3	12024	UNISTRUT CHNL. 72" long (# P 1000)	1
4	12026	UNISTRUT NUTS 3/8-16 (# P 1008)	8
5	K-178	HEX HD. BOLT 3/8-16 x 1"	8
6	5235	3/8" FLAT WASHER	8
7	14025	3/8" LOCK WASHER	8
8	5622	STEEL SPLICE PINS 1/8" dia. x 7"	8
9	23315	SPLICE PIN INSTALLATION TOOL	1

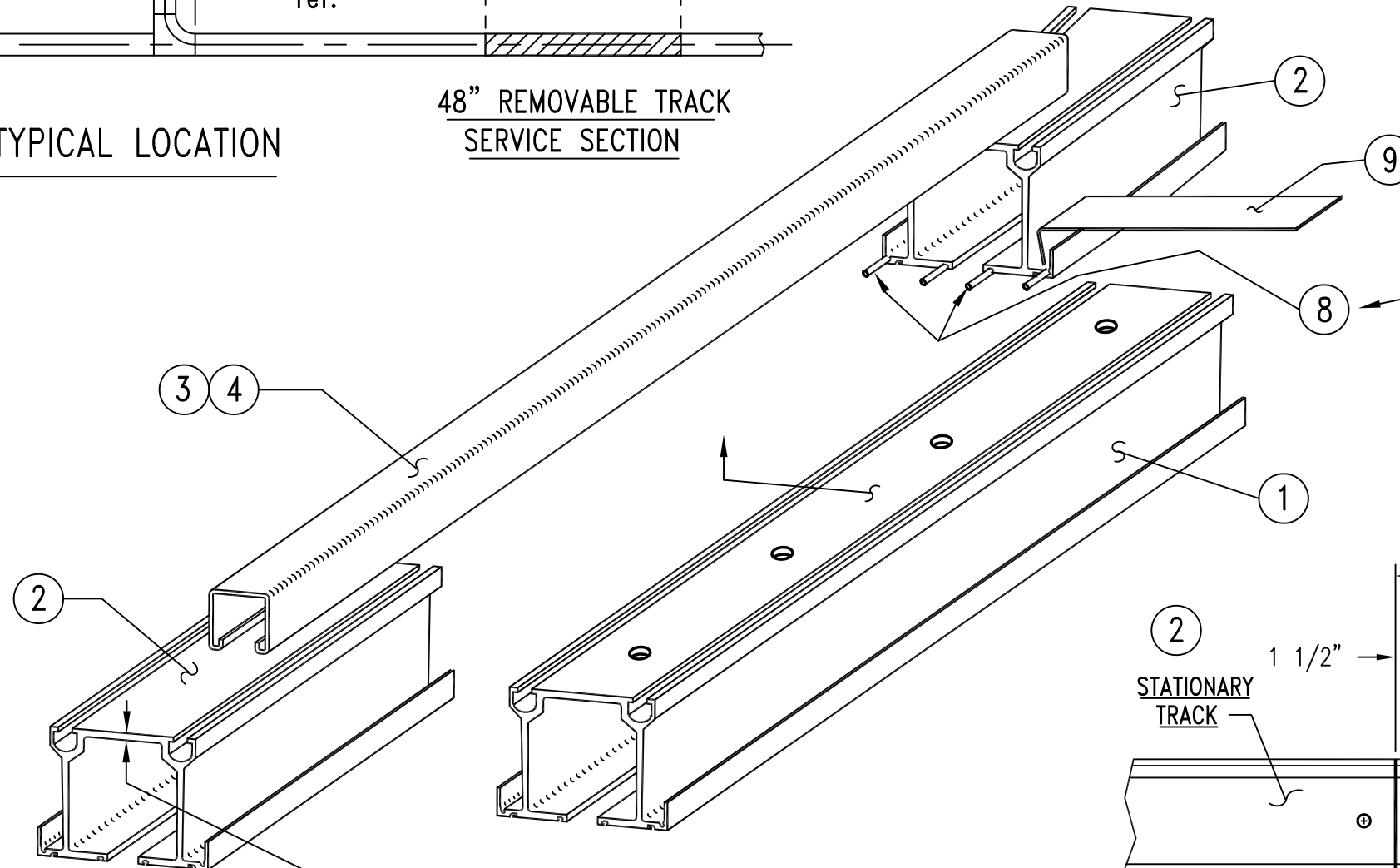


TYPICAL LOCATION

48" REMOVABLE TRACK
SERVICE SECTION

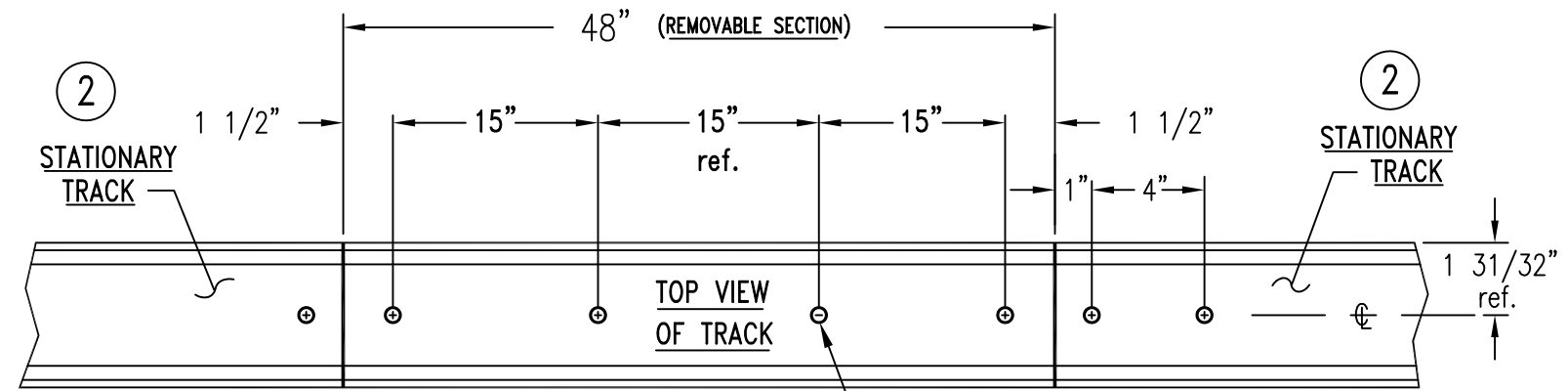
NOTE:

IF TRACK IS INSTALLED IN A "HARD" CEILING (GYPBOARD or PLASTER), DO NOT INSTALL OUTBOARD PINS.



TRACK WALL THICKNESS:
1/8" TRACK TYPE 7
3/16" TRACK TYPE 8

HANGER RODS SHOULD BE LOCATED
CLOSE TO REMOVABLE SECTION



SEQUENCE OF ASSEMBLY:

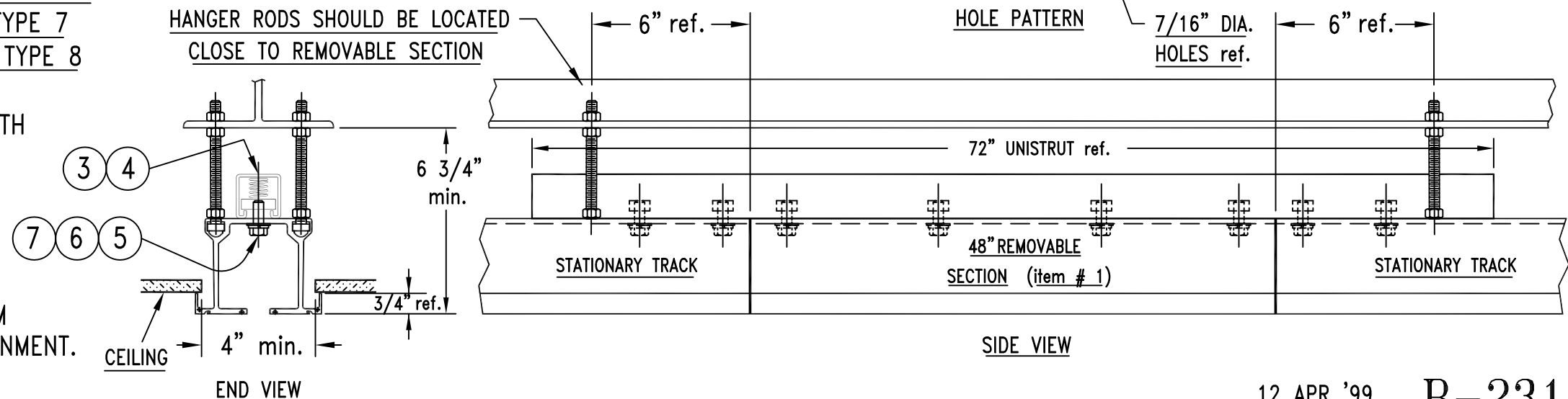
INSTALL SPLICE PINS (item # 8) COMPLETELY INTO BOTH ENDS OF STATIONARY TRACK PIECES.

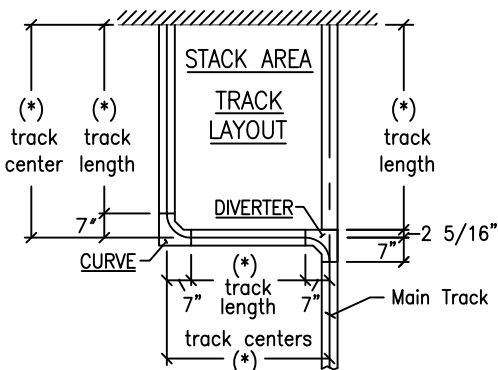
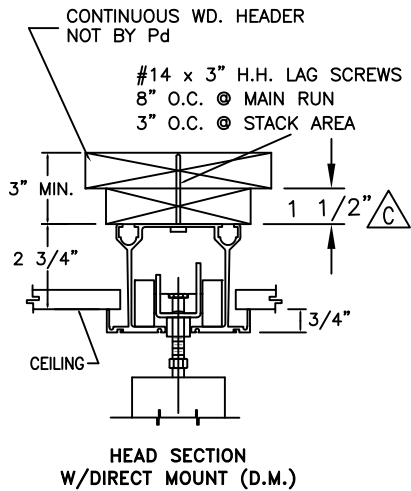
BOLT UNISTRUT CHANNEL & NUTS (item # 3 & 4) ON TOP OF BOTH STATIONARY TRACK PIECES.

BOLT 48" REMOVABLE TRACK LIGHTLY IN PLACE.

ALIGN TRACK AND MOVE SPLICE PINS (item # 8) FROM STATIONARY TRACK INTO 48" PIECE TO COMPLETE ALIGNMENT.

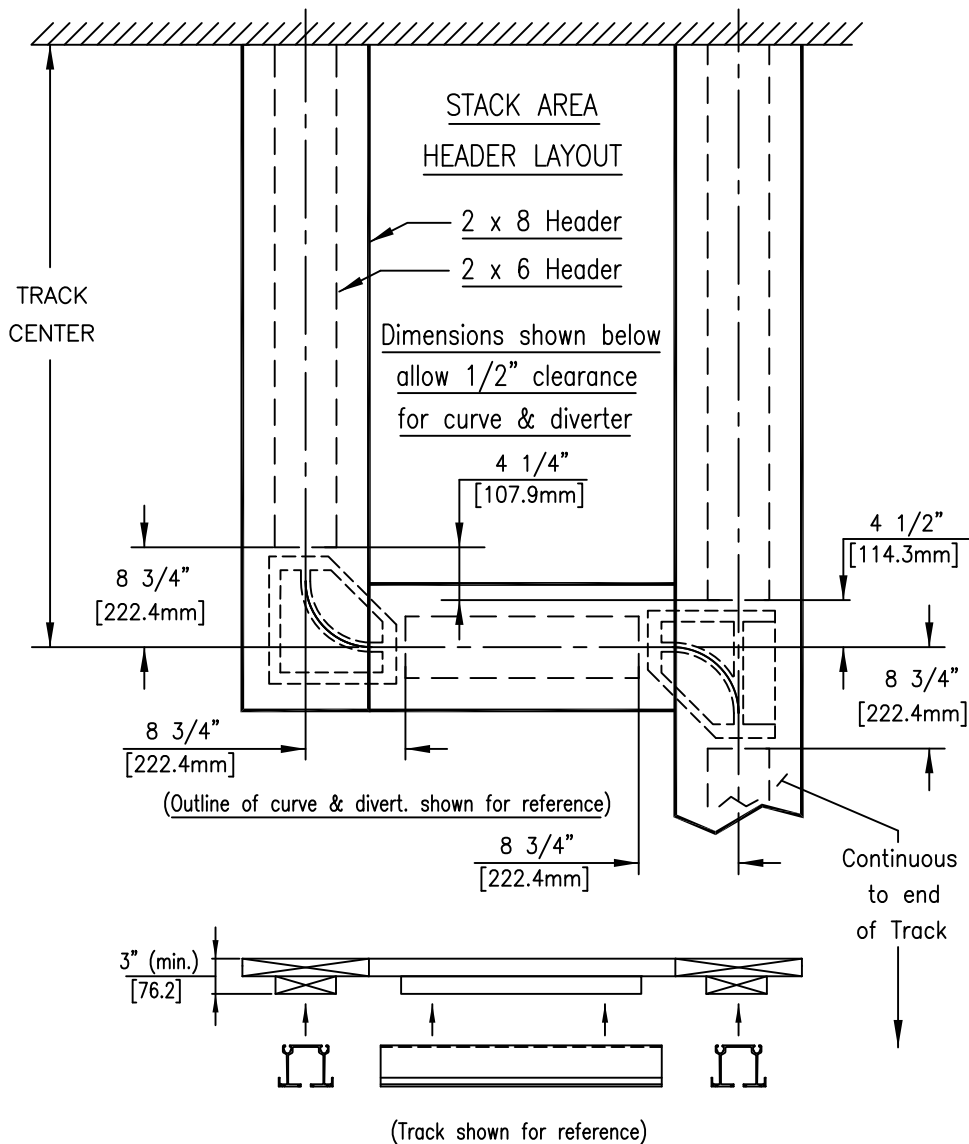
TIGHTEN ALL HEX HEAD BOLTS.





Above dimensions marked (*) are obtained from Customer Track Layout Drawing

(Typical Left Hand Layout Shown)

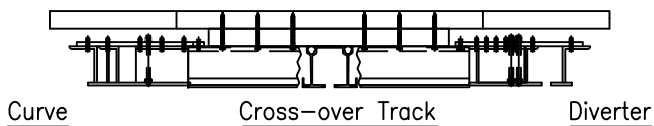


Attach 2 x 8 wooden headers on track centers.

Add 2 x 6 wooden headers underneath, allowing 1/2" clearance for curve, track, diverter assembly.

NOTE: The same size headers may used. (2 x 6 minimum) (2 x 6 & 2 x 8 are shown for clarity.)

Headers are always located on Center Line of Track.



SEE DRAWING # 25373 for MOUNTING INSTRUCTIONS.

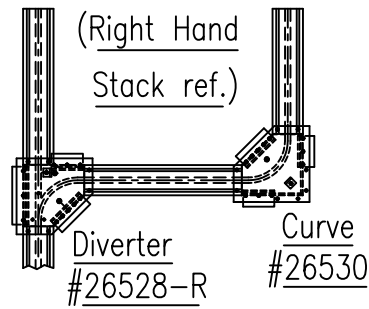
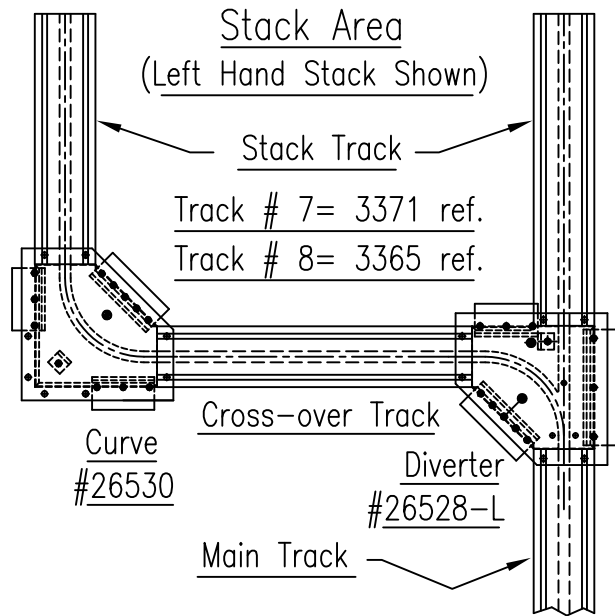
				MATERIAL	
C	Added 1 1/2" dim.	J.A.M.	05 MAY 99	FINISH	
B	Simplified header layout	J.A.	28 AUG 98	TYP. WALL	INSTALLATION of WOODEN HEADERS for DIRECT MOUNT (with screws) of INDIVIDUAL PANELS TRACK TYPE 7/8
A	3 x 12 Wooden Headers were 3 x 10 Dwg # was X-7429	J.A.	20 AUG 98	AREA	
LTR.	REVISION	BY	DATE	PERIMETER	TOLERANCES @ INCHES
				WEIGHT	.X = .XX = .XXX =
CONFIDENTIAL: This drawing and its technical contents are the confidential and exclusive property of PANELFOLD, INC. MIAMI, FL, USA and its reproduction or the use or disclosure of its contents without the express written permission of PANELFOLD, INC. is strictly prohibited.				DRAFTER JIM A	APPROVED BY
				DATE 13 AUG 98	SCALE n.t.s.
				SIZE A	THIRD ANGLE PROJECTION DESIGN IS IN INCHES DWG.NO. 25372

PANELFOLD

P.O. BOX # 683130 MIAMI, FL. 33168
 TEL. # (305) 688-3501 FAX # (305) 688-0185

Hex Bolt 3/8-16 x 3/4" (# K-176)
 3/8" Flat Washer (# 5007)
 3/8" Lock Washer (# 14025)

CURVE
 #26530



3/8-16 Square Nut (#4830)
 (Inside Track)

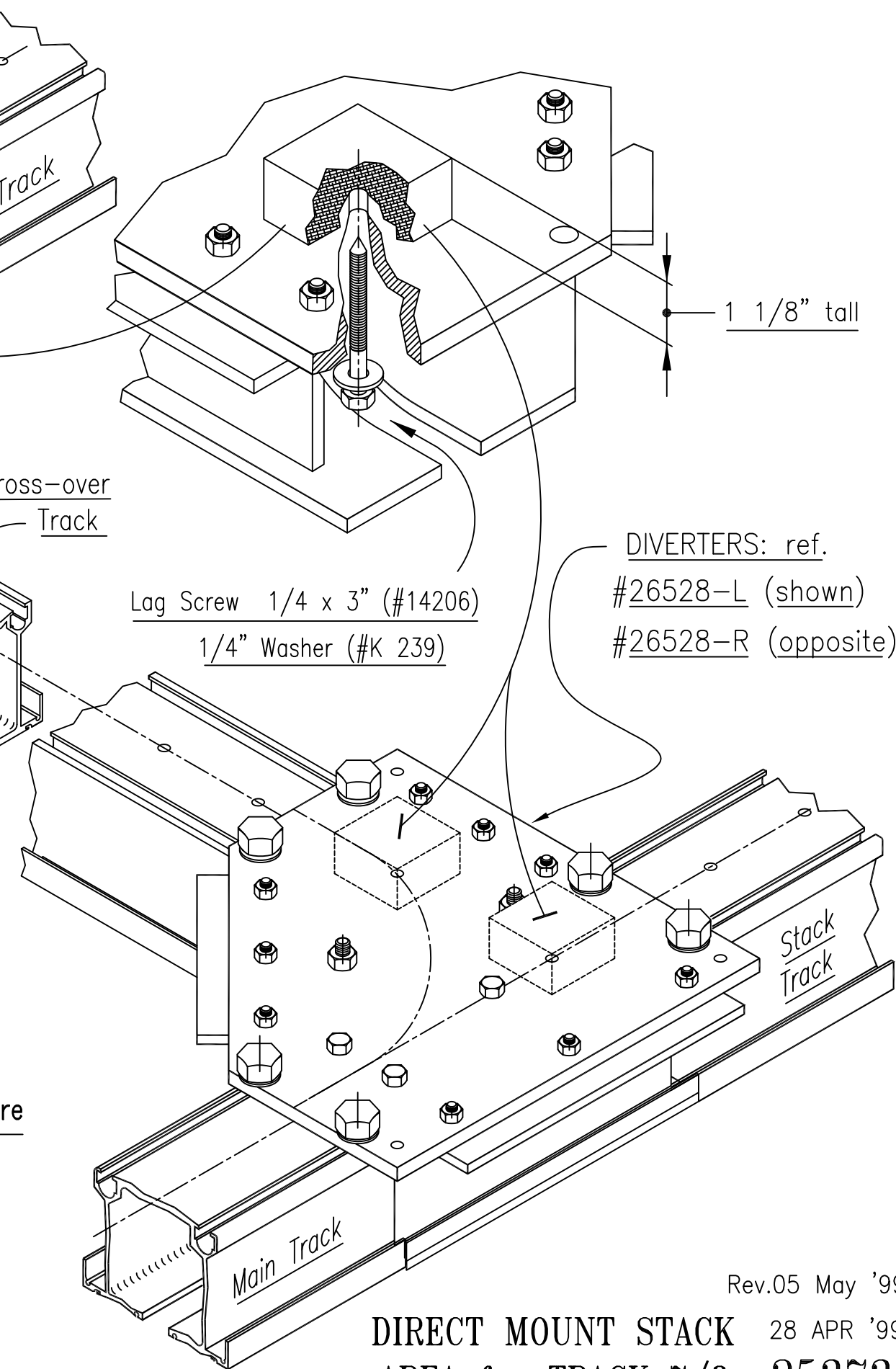
Cross-over Track

Lag Screw 1/4 x 3" (#14206)
 1/4" Washer (#K 239)

DIVERTERS: ref.
 #26528-L (shown)
 #26528-R (opposite)

1 1/8" tall

1. Install Wooden Headers as shown on dwg. # 25372.
2. Assemble Curve, Cross-over Track, Diverter, Stack Tracks, & first piece of Main Track into (1) unit.
3. On top of Curve & Diverter top plates, add 1 1/8" thick wood spacers (any size) on top of (2) holes provided in top plates. Use Lag screws & washers as shown.
5. Raise Curve, Cross-over Track, Diverter, Stack Tracks, & Main Track unit into desired position & secure unit with lag screws & washers thru track opening onto header. Tighten lag screws inside curve & diverter into header.
6. Holes for 1/4" screws have been provided in the corners of the curve and diverter for spacers used for leveling curve/diverter assembly.
7. Add the rest of the Main Track. Use (4) splice pins (# 5622) per Track Section.



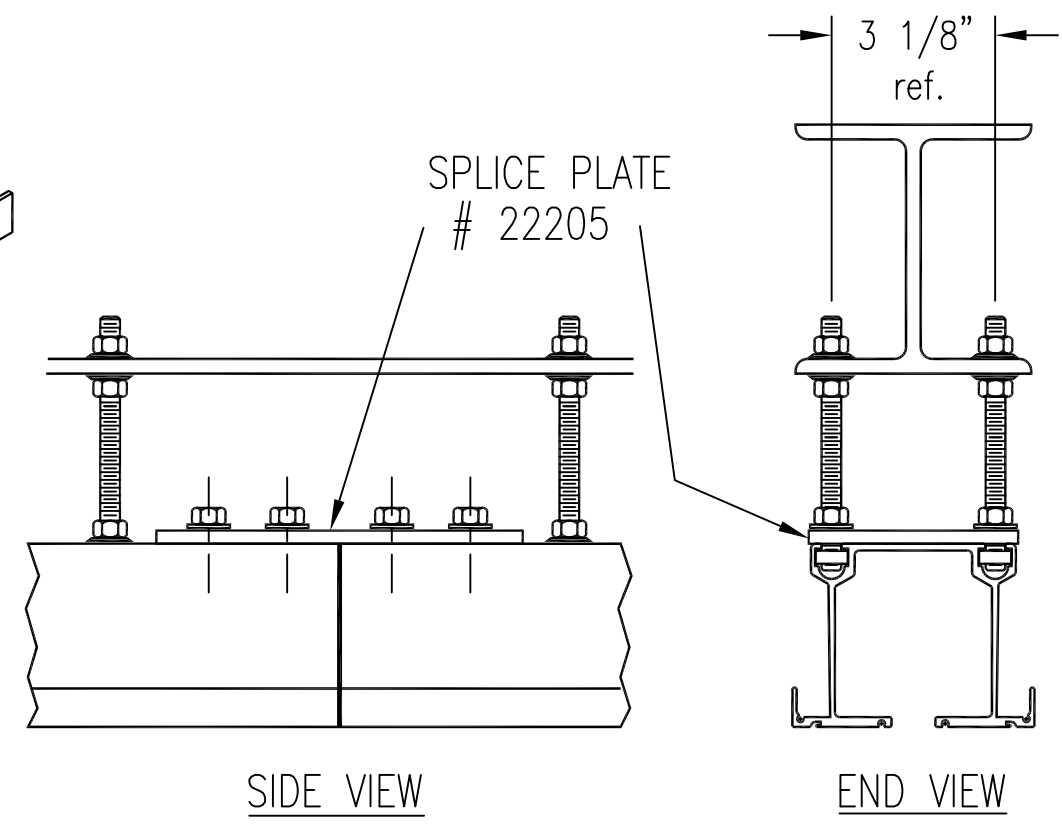
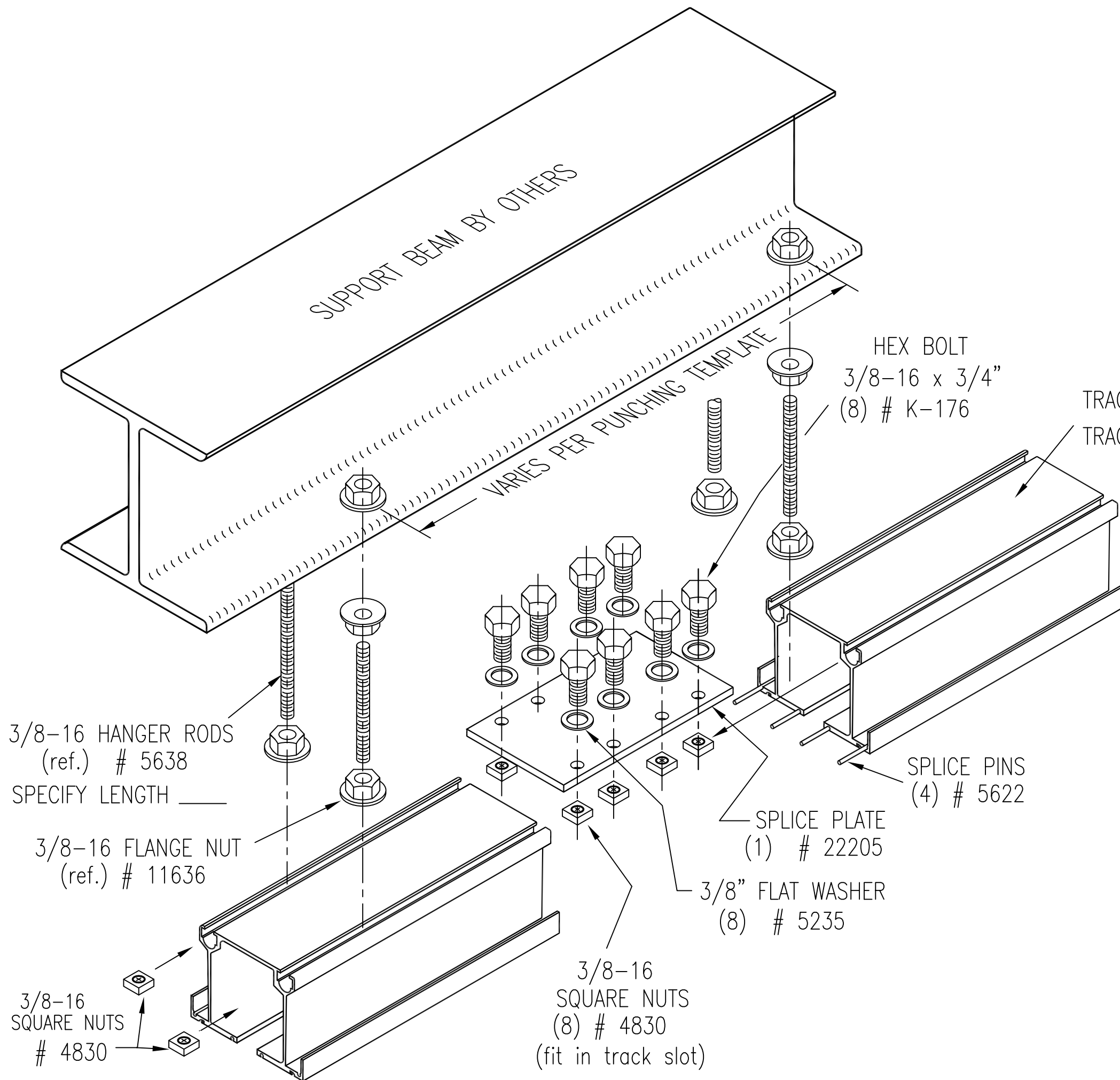
Rev.05 May '99
 DIRECT MOUNT STACK 28 APR '99
 AREA for TRACK 7/8 25373



P.O. BOX 683130 MIAMI, FL. 33168

TEL. (305) 688-3501 FAX: (305) 688-0185

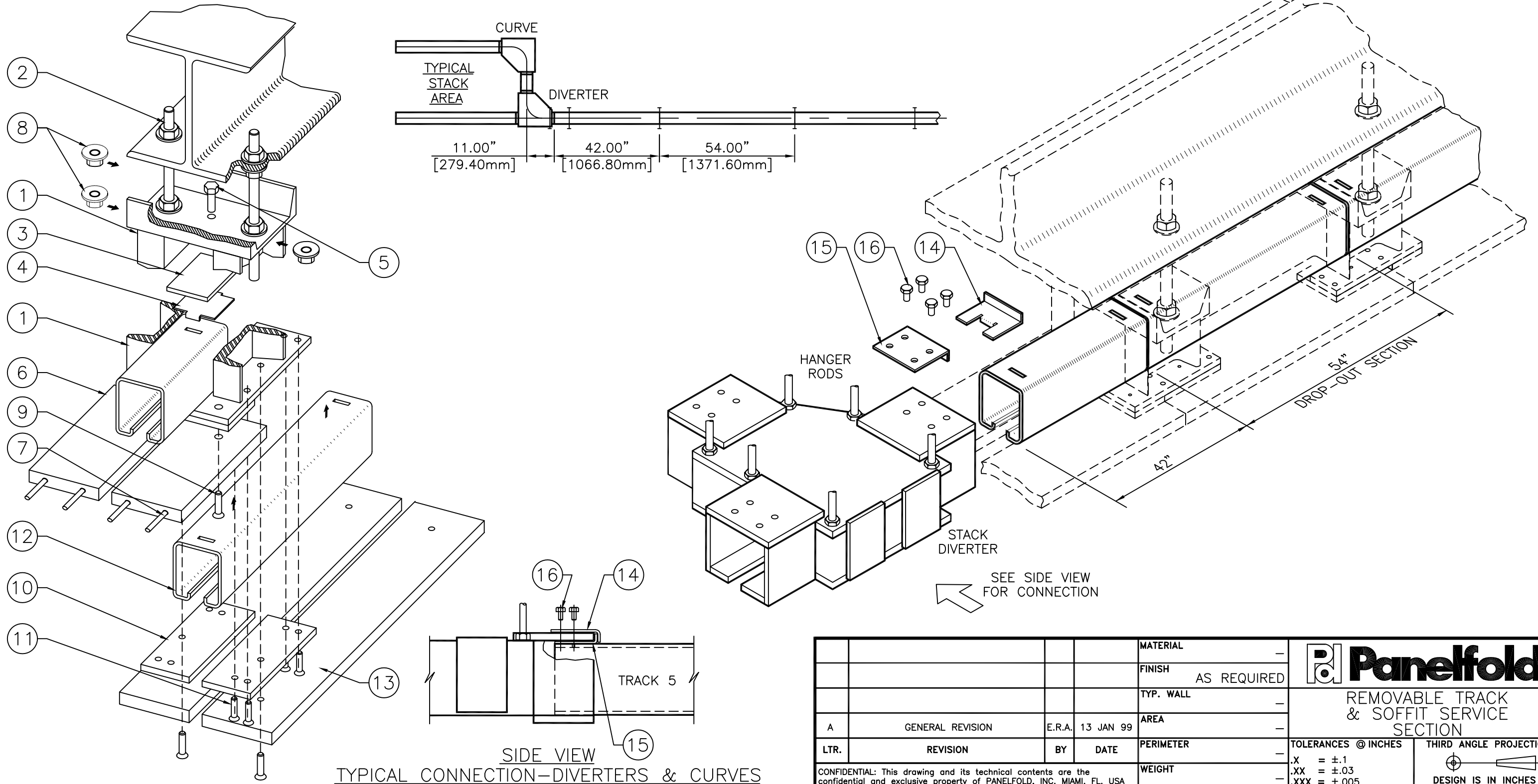
CONFIDENTIAL: this drawing and its technical contents are the confidential and exclusive property of PANEFOLD INC. MIAMI, FL. U.S.A. and its reproduction or disclosure of its contents without the express written permission of Panefold Inc. is strictly prohibited.



SPLICE PLATE INSTALLATION FOR
TYPE 7 or TYPE 8 ALUMINUM TRACK

ITEM	PART NO.	DESCRIPTION	QTY.
1	20215	DROP SECTION HANGER ASSEMBLY	2
2	14113	HANGER ROD 1/2"-13	4
3	20877	SHIM PLATE 1/4" X 2 5/8" X 3"	1
4	20876	TRACK CLIP	1
5	K-183-A	SHIM BOLT 3/8"-16 X 1 1/4"	1
6	20273	SOFFIT, WOOD PRIMED	2
7	M-652	WOOD SOFFIT DOWEL ϕ 1/4" X 2 1/2"	4
8	11637	FLANGE NUT 1/2"-13	8

ITEM	PART NO.	DESCRIPTION	QTY.
9	14109	MS 1/4"-20 X 1-1/2" F.H. PHIL., ZINC	8
10	25052	BRACKET REMOVABLE PLATE	4
11	14111	5/16"-18 X 1" F.H. SOCKET	16
12	25053	DROP-OUT SECTION (54")	1
13	25054	SOFFIT, WOOD PRIMED (56")	2
14	20202	CLAMP BRACKET	1
15	20203	TRACK GUIDE BRACKET	1
16	14147	HEX BOLT 5/16"-18 X 5/8"	4



SIDE VIEW
TYPICAL CONNECTION-DIVERTERS & CURVES

		MATERIAL	-	Panelfold [®]			
		FINISH	AS REQUIRED				
		TYP. WALL	-	REMOVABLE TRACK & SOFFIT SERVICE SECTION			
		AREA	-				
A	GENERAL REVISION	E.R.A.	13 JAN 99	PERIMETER	TOLERANCES @ INCHES		
LTR.	REVISION	BY	DATE	WEIGHT	THIRD ANGLE PROJECTION		
CONFIDENTIAL: This drawing and its technical contents are the confidential and exclusive property of PANELFOLD, INC. MIAMI, FL, USA and its reproduction or the use or disclosure of its contents without the express written permission of PANELFOLD, INC. is strictly prohibited.				DRAWN BY	APPROVED BY		
				JIM A.		DATE	SCALE
				08 SEP 97	NTS	B	23362

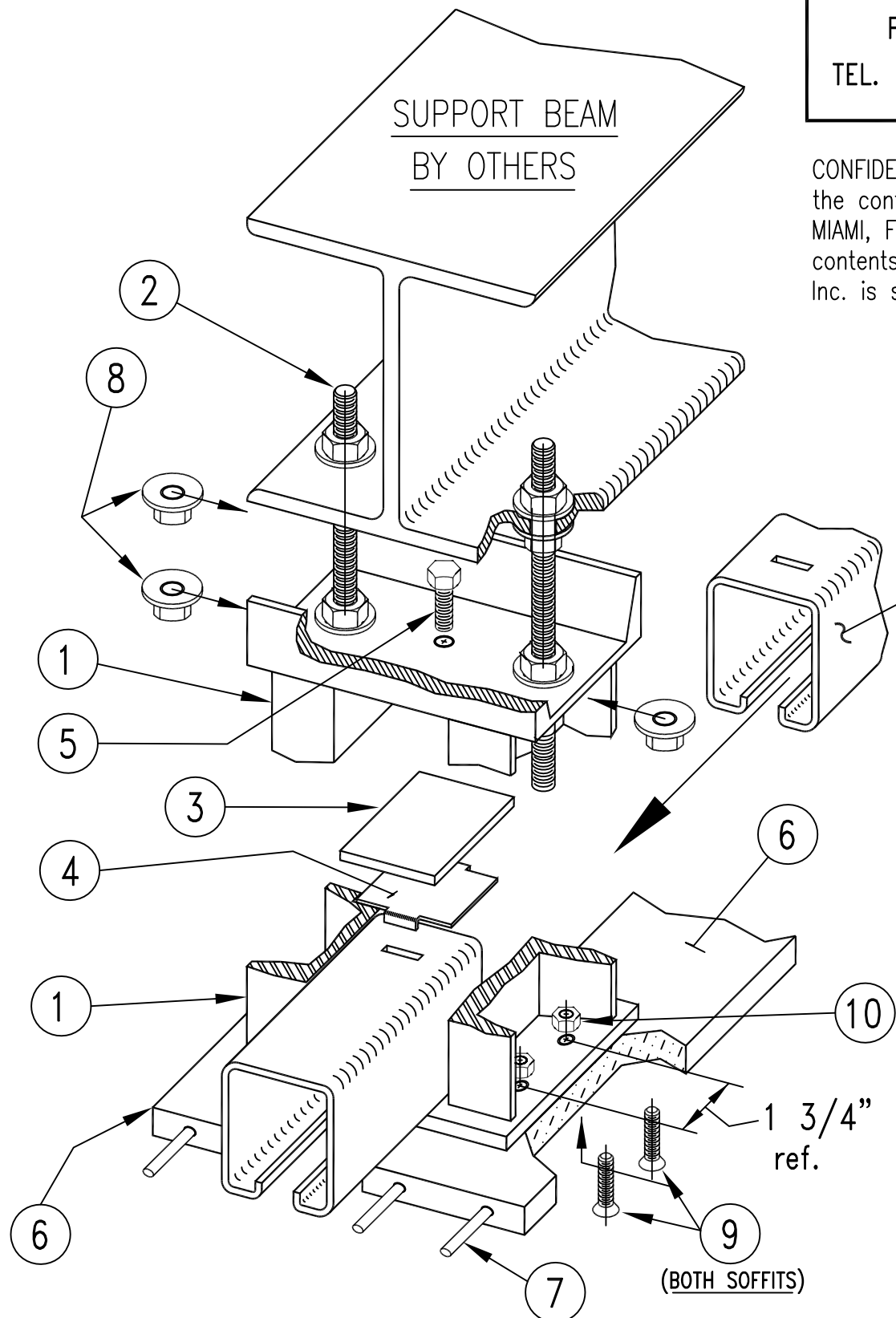
PANELFOLD

P.O. BOX # 683130 MIAMI, FL. 33168
 TEL. # (305) 688-3501 FAX # (305) 688-0185

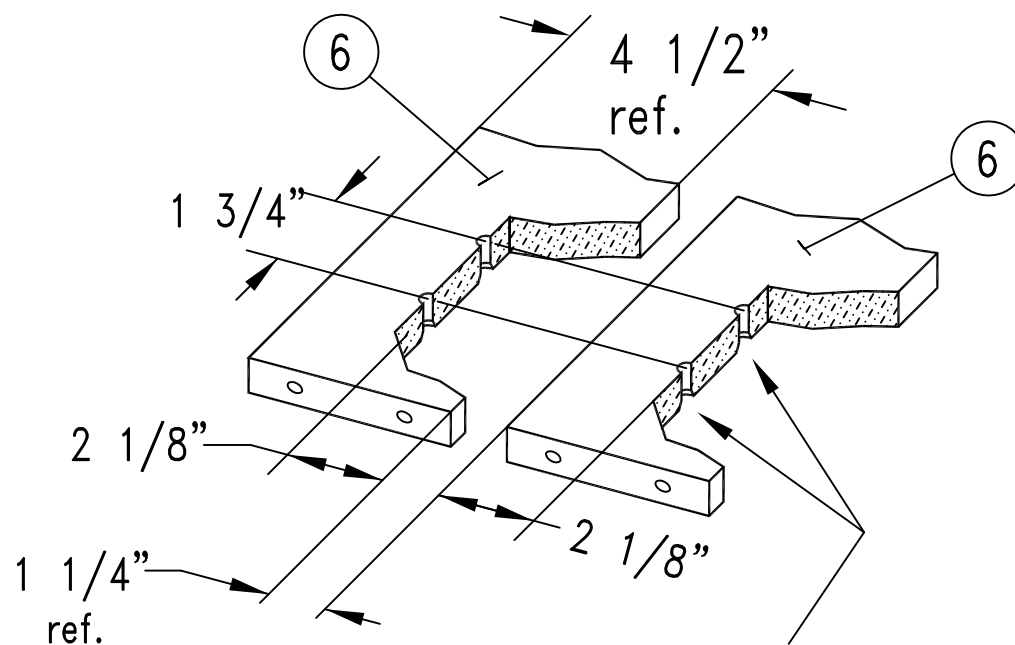
CONFIDENTIAL: this drawing and its technical contents are the confidential and exclusive property of PANELFOLD INC. MIAMI, FL. U.S.A. and its reproduction or disclosure of its contents without the express written permission of Panelfold Inc. is strictly prohibited.

TYPE 5 TRACK , TRACK SPLICE , and SOFFIT SPLICE ASSEMBLY DETAIL

ITEM	PART #	DESCRIPTION	QTY.
1	20215	HANGER BRACKET	1
2	14113	HANGER ROD (1/2-13 THD.)	2
3	20877	SHIM PLATE (1/4" x 2 5/8" x 3")	1
4	20876	TRACK CLIP	1
5	K-183-A	SHIM BOLT 3/8-16 x 1 1/4"	1
6	20273	SOFFIT , WOOD , PRIMED (95")	2
7	M-652	WOOD SOFFIT DOWEL 1/4" dia. x 2 1/2"	4
8	11637	FLANGE NUT 1/2-13 THD.	8
9	14109	SOFFIT SCREWS 1/4-20 x 1 1/2" FL. HD.	4
10	5205	HEX NUT 1/4-20 THD.	4

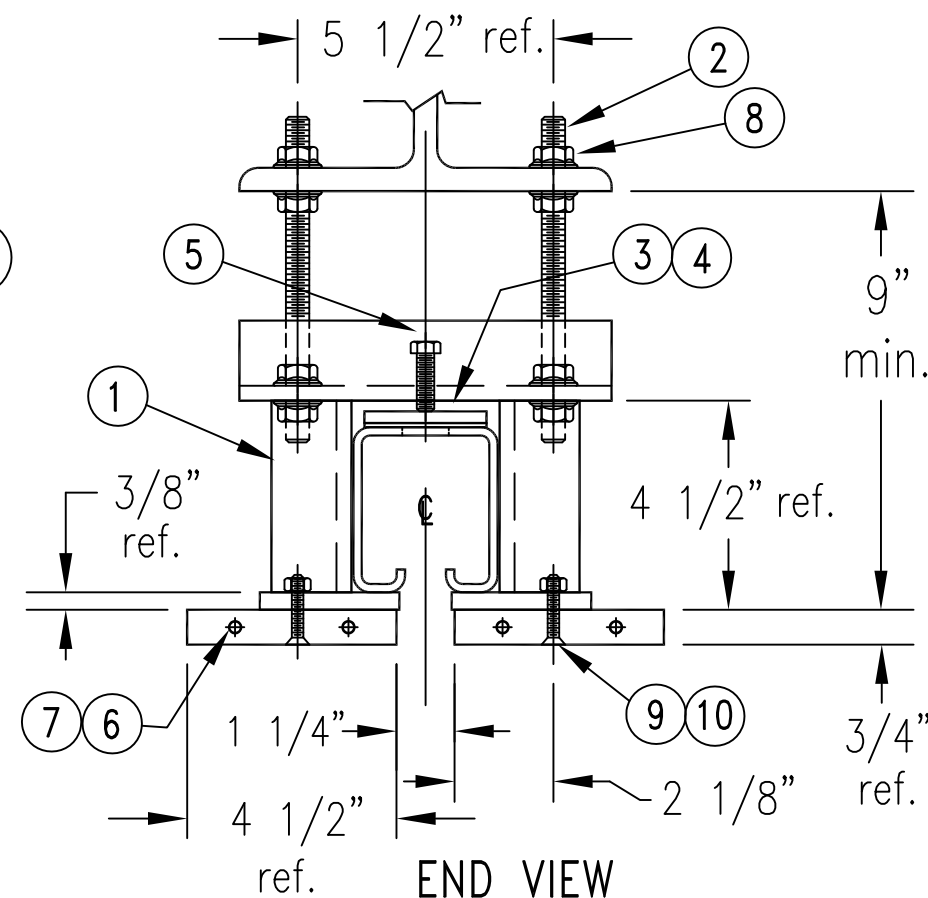


TYPE 5 TRACK
20014 ref.



DRILL & C'SINK (BELOW FLUSH)
FOR (2) 1/4-20 FL. HD. SCRS. (ITEM # 9)

SOFFIT DETAIL (typ. both soffits)



END VIEW
STANDARD TRACK 5
HEAD SECTION

(HANGER BRACKET CUT AWAY TO SHOW ASSEMBLY)

The above view shows a typical track splice using a track clip (item # 4)

A typical hanger bracket that is not located at a track splice also should use a shim plate (item # 3).

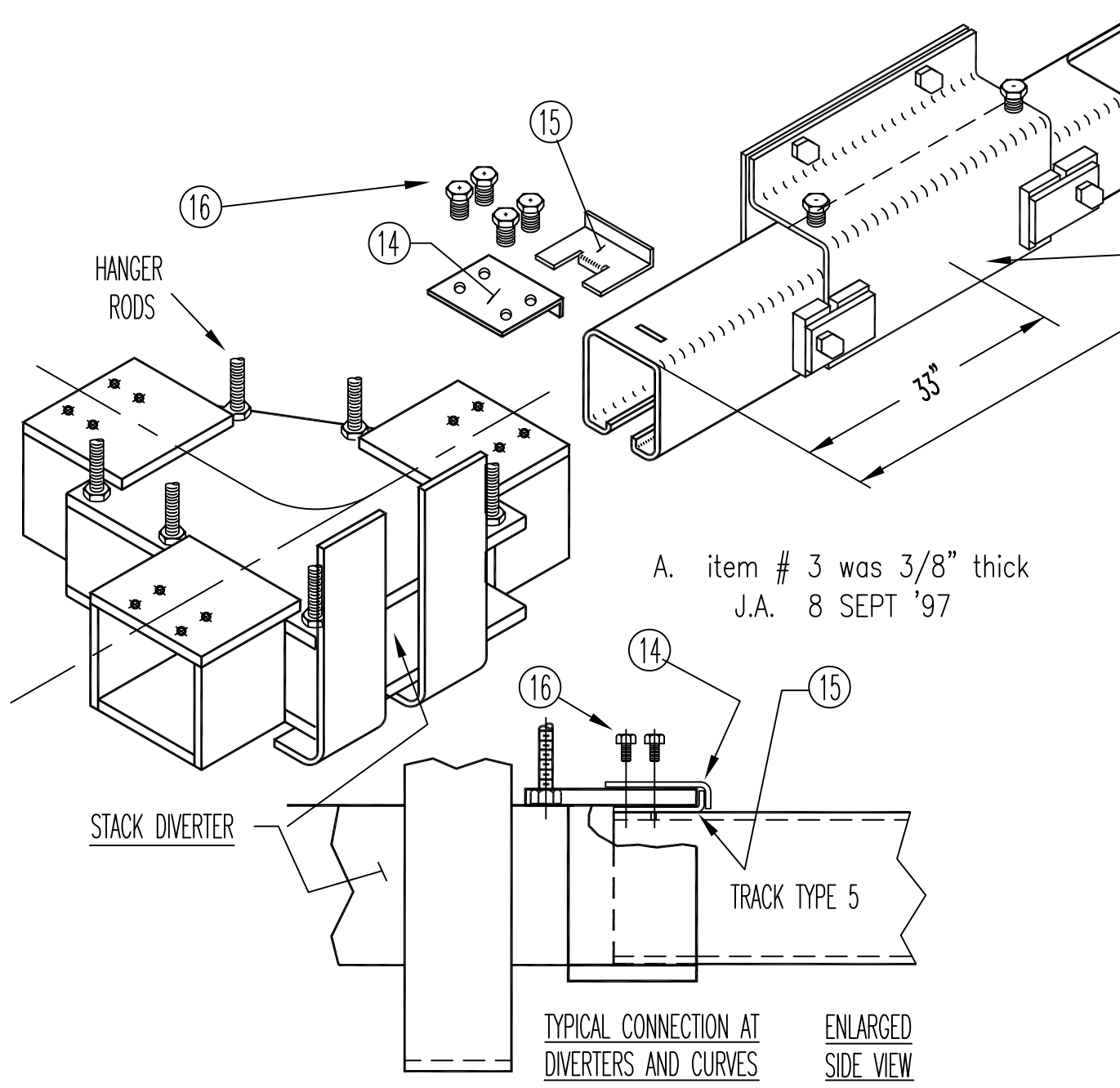
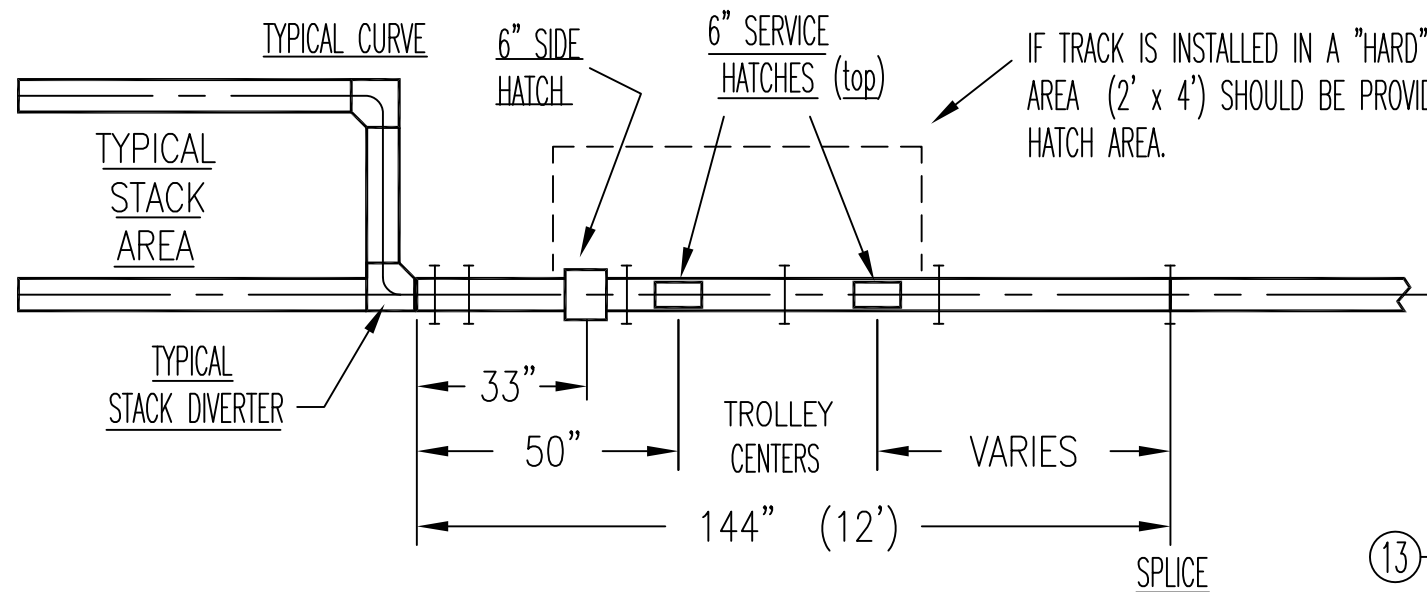
8 SEPT '97

B-23318

PANELFOLD

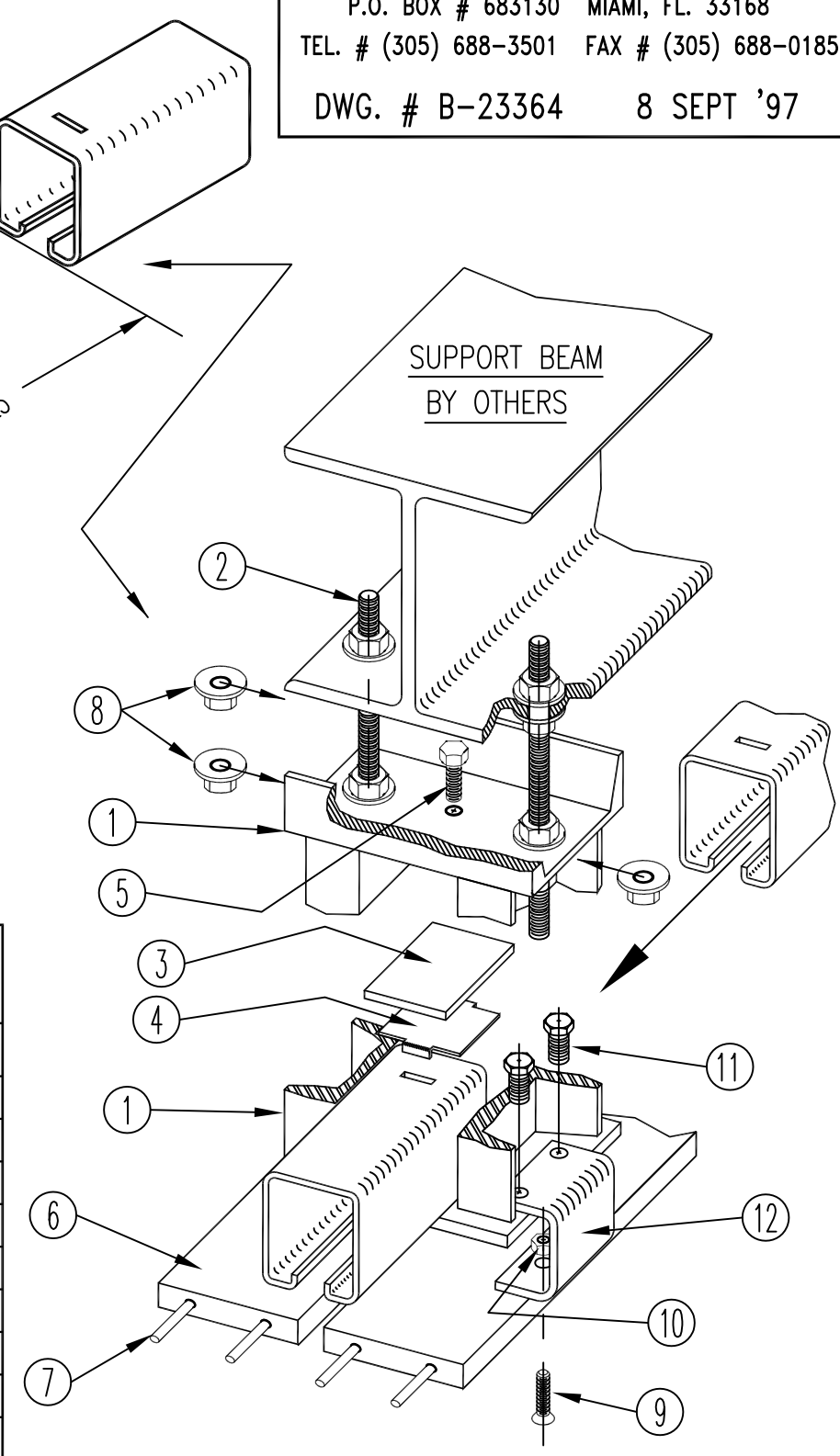
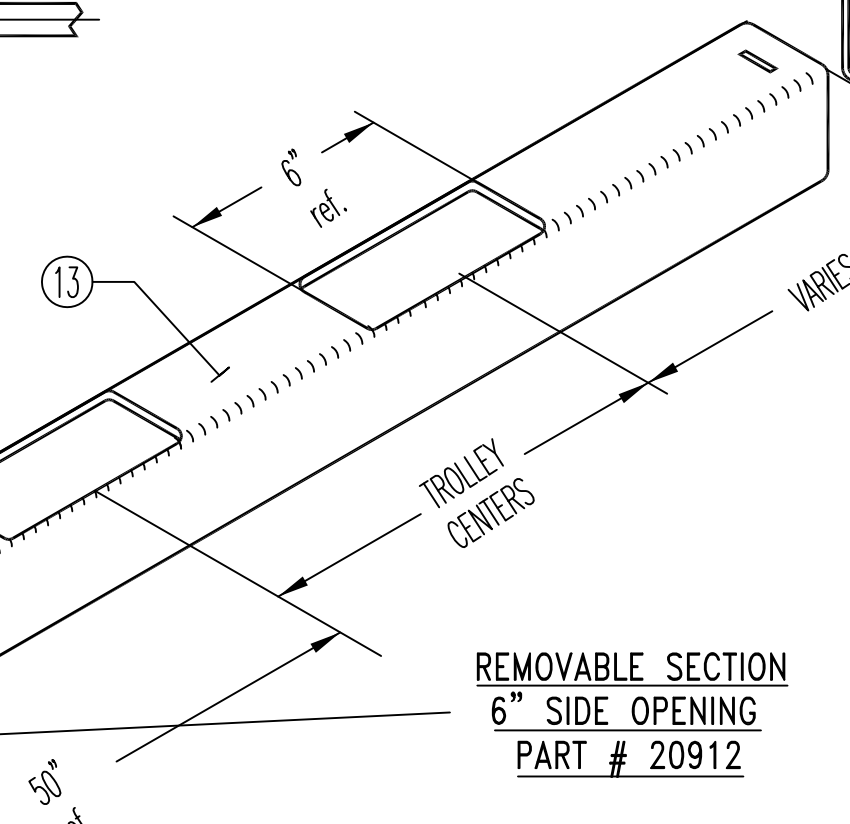
P.O. BOX # 683130 MIAMI, FL. 33168
 TEL. # (305) 688-3501 FAX # (305) 688-0185

DWG. # B-23364 8 SEPT '97



TYPE 5 TRACK SPLICE
 for info on soffit splice see dwg. # B-23318

ITEM	PART #	DESCRIPTION	QTY.
1	20215	HANGER BRACKET	1
2	14113	HANGER ROD (1/2-13 THD.)	2
3	20877	SHIM PLATE (1/4" x 2 5/8" x 3")	1
4	20876	TRACK CLIP	1
5	K-183-A	SHIM BOLT 3/8-16 x 1 1/4"	1
6	20273	SOFFIT, WOOD, PRIMED (95")	2
7	M-652	WOOD SOFFIT DOWEL 1/4" dia. x 2 1/2"	4
8	11637	FLANGE NUT 1/2-13 THD.	8
9	K-126	SOFFIT SCREWS 1/4-20 x 1 1/4" FL. HD.	2
10	5205	HEX NUT 1/4-20 THD.	4
11	5234	3/8-16 x 3/4" HEX HD. BOLT	4
12	20219	SOFFIT SUPPORT	2
13	20913	TYPE 5 TRACK (144" long)	1
14	20202	CLAMP BRACKET	1
15	20203	TRACK GUIDE BRACKET	1
16	14147	5/16-18 x 5/8" HEX HD. BOLT	4



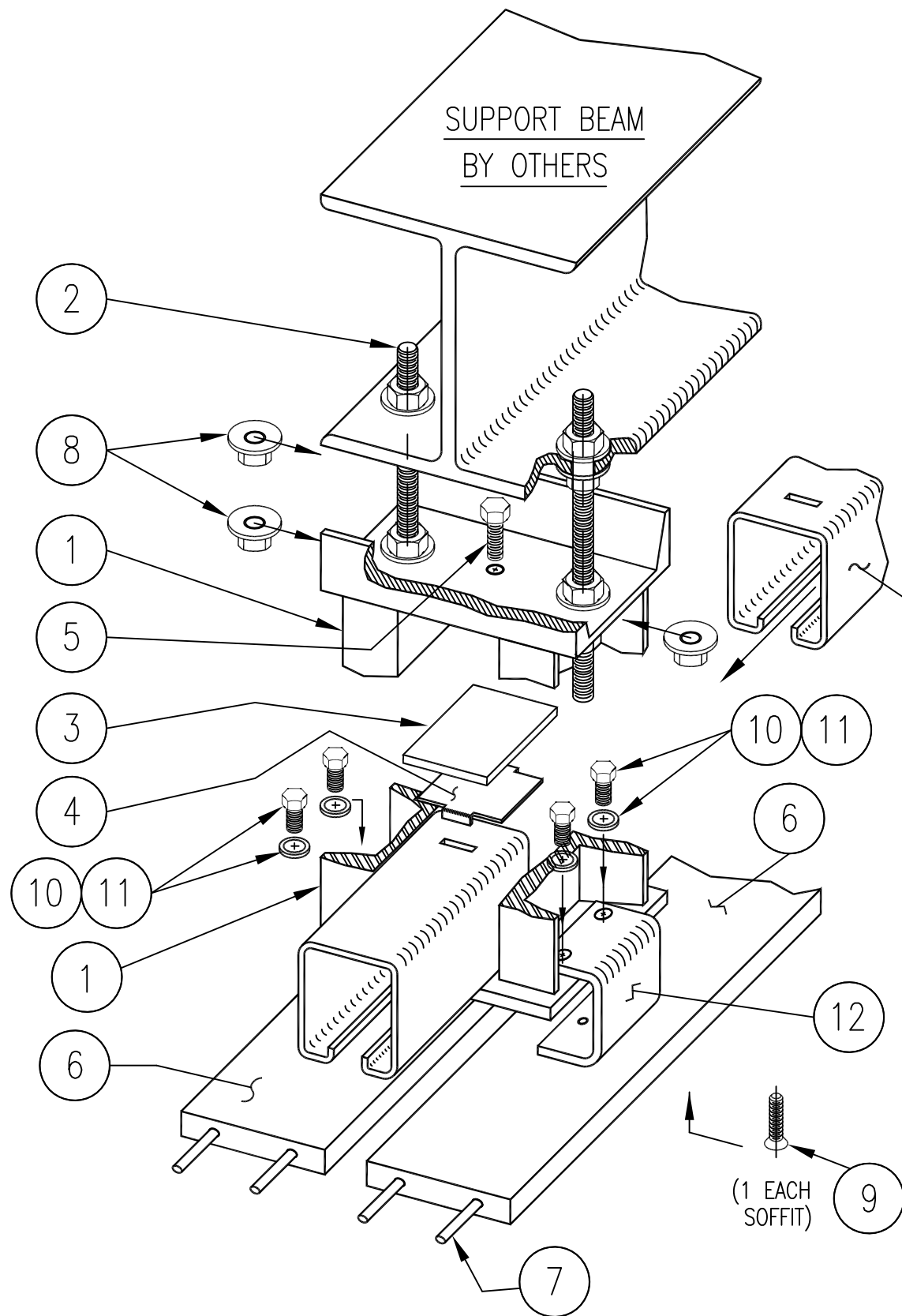
TRACK TYPE 5 SPLICE
 DROPPED SOFFIT
 INDIVIDUAL PANEL MODELS

8 SEPT '97 B-23364

PANELFOLD

P.O. BOX # 683130 MIAMI, FL. 33168
 TEL. # (305) 688-3501 FAX # (305) 688-0185

CONFIDENTIAL: this drawing and its technical contents are the confidential and exclusive property of PANELFOLD, INC. MIAMI, FLORIDA, USA, and its reproduction or the use or disclosure of its contents without the express written permission of Panelfold, inc. is strictly prohibited.



(HANGER BRACKET CUT AWAY TO SHOW ASSEMBLY)

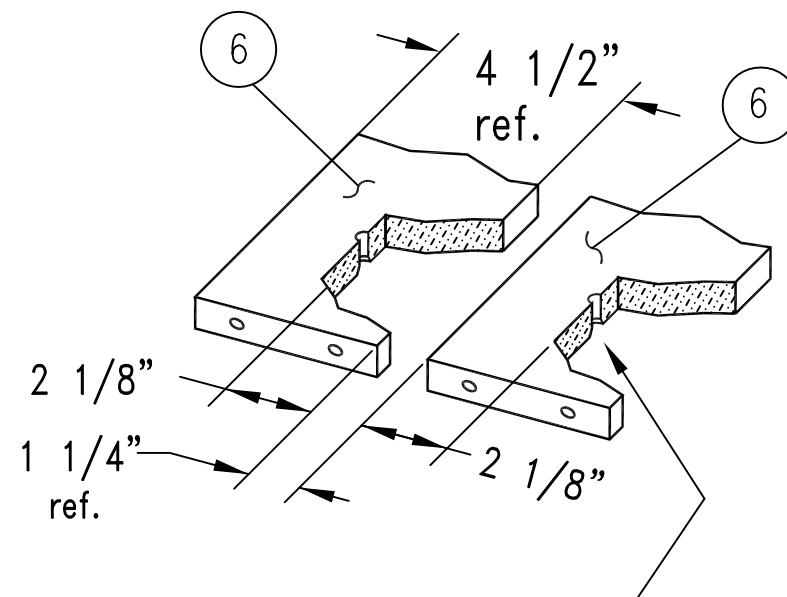
The above view shows a typical track splice using a track clip (item # 4)

A typical hanger bracket that is not located at a track splice also should use a shim plate (item # 3).

TYPE 5 TRACK
 # 20014 ref.

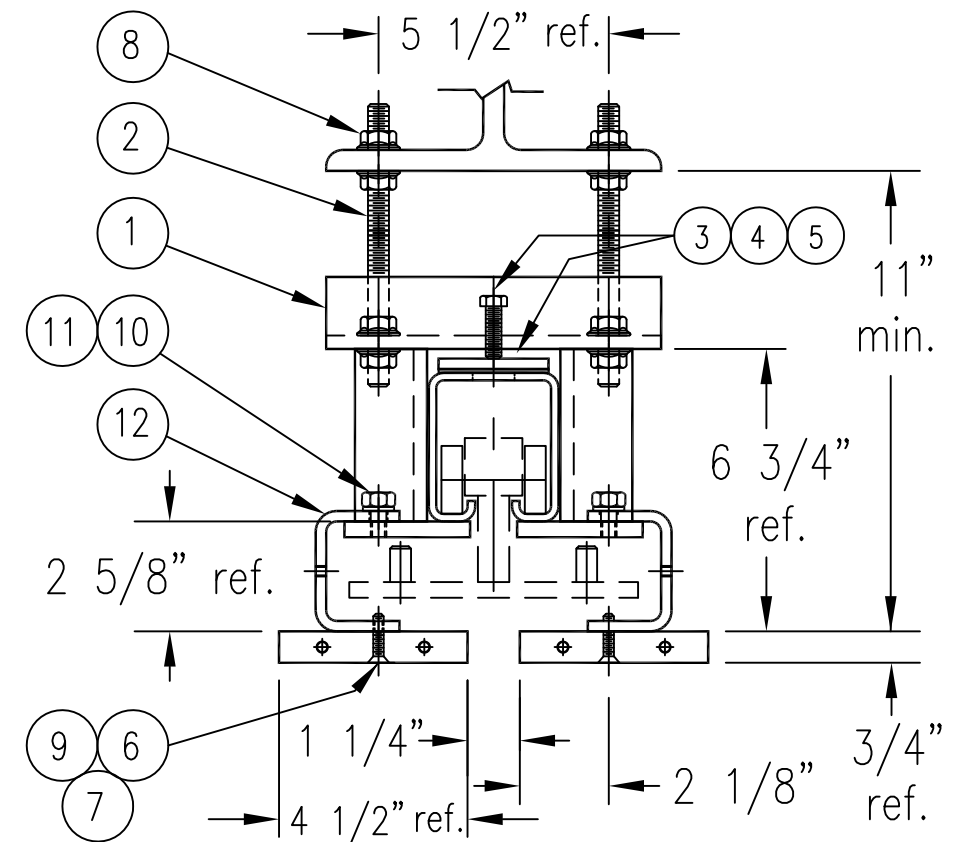
DRILL & C'SINK (BELOW FLUSH)
 FOR (1) 1/4-20 FL. HD. SCR. (ITEM # 9)

SOFFIT DETAIL (typ. both soffits)



TYPE 5 TRACK , TRACK SPLICE , and DROPPED SOFFIT SPLICE ASSEMBLY DETAIL

ITEM	PART #	DESCRIPTION	QTY.
1	20215	HANGER BRACKET	1
2	14113	HANGER ROD (1/2-13 THD.)	2
3	20877	SHIM PLATE (1/4" x 2 5/8" x 3")	1
4	20876	TRACK CLIP	1
5	K-183-A	SHIM BOLT 3/8-16 x 1 1/4"	1
6	20273	SOFFIT , WOOD , PRIMED (95")	2
7	M-652	WOOD SOFFIT DOWEL 1/4" dia. x 2 1/2"	4
8	11637	FLANGE NUT 1/2-13 THD.	8
9	K-123	SOFFIT SCREWS 1/4-20 x 1" FL. HD.	2
10	K-176	HEX HD. SCR. 3/8-16 x 3/4"	4
11	14025	3/8" LOCKWASHER	4
12	20219	DROP SOFFIT BRACKET	2

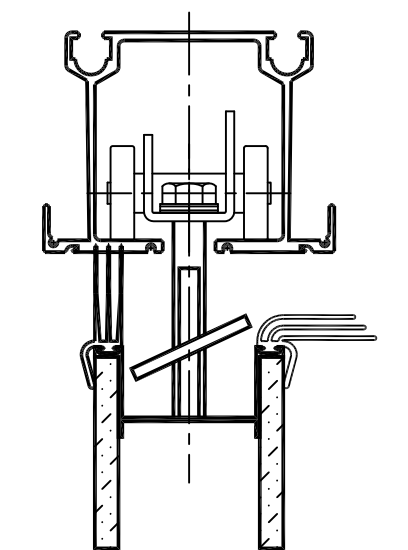
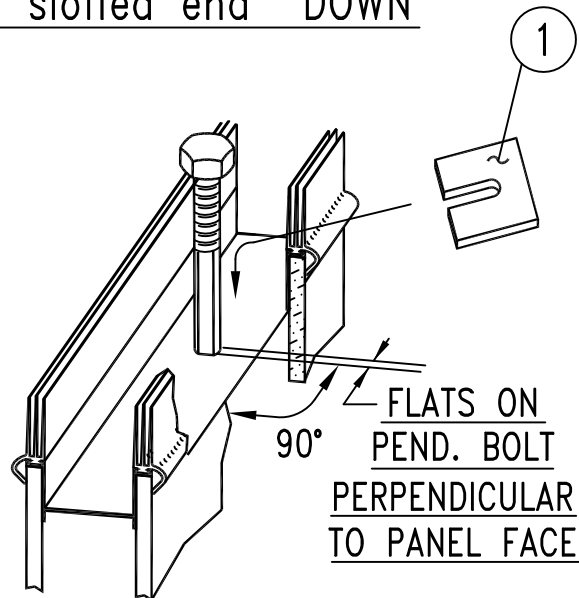


END VIEW - DROPPED SOFFIT
 TRACK 5 HEAD SECTION

8 SEPT '97
 B-23319

CONFIDENTIAL: this drawing and its technical contents are the confidential and exclusive property of PANELFOLD, INC. MIAMI, FLORIDA, USA, and its reproduction or disclosure of its contents without the express written permission of Panelfold, inc. is strictly prohibited.

plate must be inserted with slotted end "DOWN"

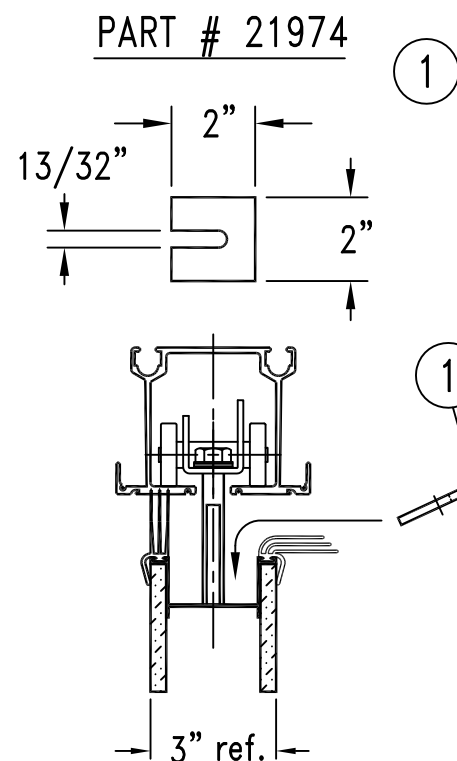


LOCKING PLATE CAN ONLY BE INSERTED AS SHOWN

ENLARGED VIEW

SERIES 400

S.T.C. 38, 42, 44



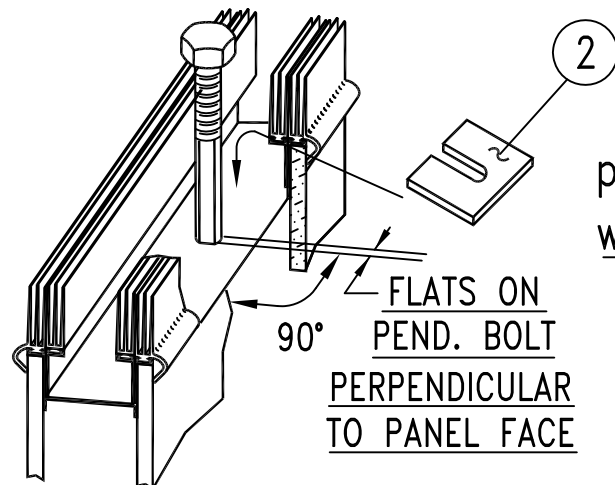
PANELFOLD

P.O. BOX # 683130 MIAMI, FL. 33168
TEL. # (305) 688-3501 FAX # (305) 688-0185

DWG. # B-23320 9 SEPT '96

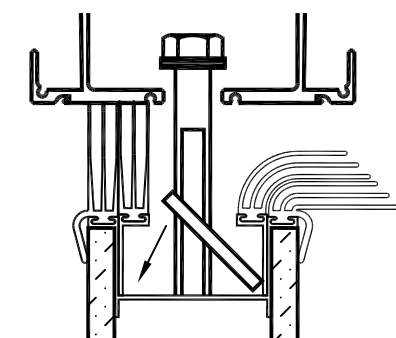
LOCKING PLATE & PENDANT BOLT ASSEMBLY DETAIL SERIES 400

ITEM	PART #	DESCRIPTION
1	21974	STD. LOCKING PLATE SERIES 400 1/2" PEND. BOLT
2	22757	LOCKING PLATE S.T.C. 47 SERIES 400 1/2" PEND. BOLT
3	23235	LOCKING PLATE FOR OPERABLE TOP SEAL SERIES 400, 1/2" PENDANTS



IMPORTANT NOTE:
plate must be inserted with slotted end "UP"

S.T.C. 47
(double top seals)

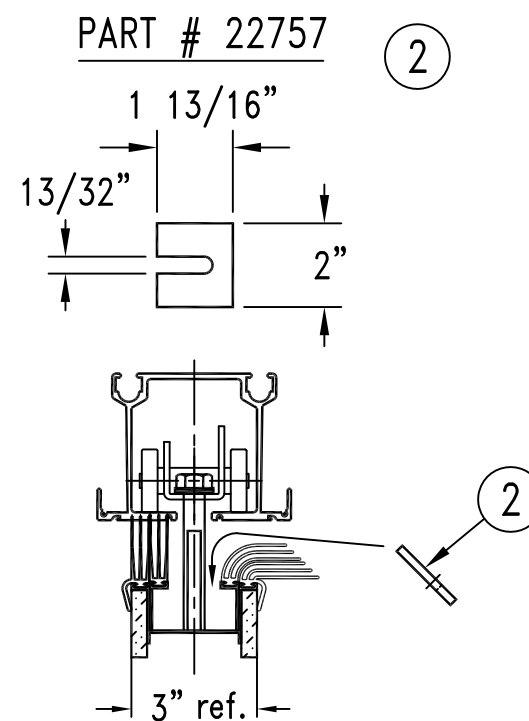


LOCKING PLATE CAN ONLY BE INSERTED AS SHOWN

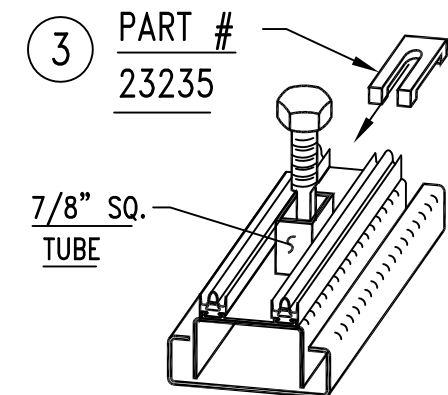
ENLARGED VIEW

SERIES 400

S.T.C. 47 (DOUBLE TOP SEALS)



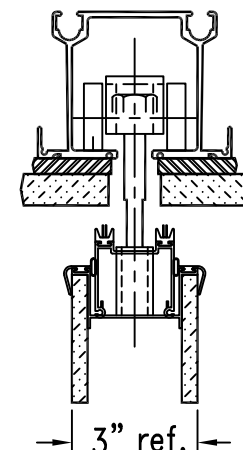
1/2-20 JAMB NUT # 11562



INSERT LOCKING PLATE FROM END OF PANEL

FLATS ON PEND. BOLT PARALLEL TO PANEL FACE

OPERABLE TOP SEAL SERIES 400



PART # 23235

(fits on top of square tube)

OPERABLE TOP SEAL SERIES 400

(SEE SKETCH ABOVE)

10 FEB '00

23320-1

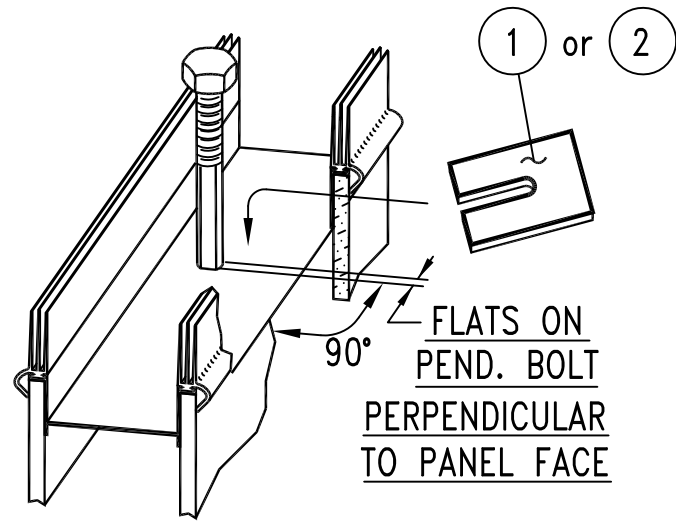
PANELFOLD

P.O. BOX # 683130 MIAMI, FL. 33168
 TEL. # (305) 688-3501 FAX # (305) 688-0185

LOCKING PLATE & PENDANT BOLT ASSEMBLY DETAIL SERIES 500, 600 & 800

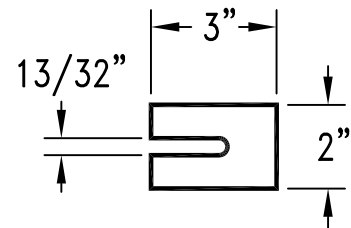
ITEM	PART #	DESCRIPTION
1	22391	LOCKING PLATE SERIES 600 1/2" PEND. BOLT
2	22358	LOCKING PLATE SERIES 600 5/8" PEND. BOLT
3	21974	LOCKING PLATE SERIES 800 1/2" PEND. BOLT
4	21975	LOCKING PLATE SERIES 800 5/8" PEND. BOLT
5	23378	LOCKING PLATE 3" GYM WALL 5/8" PEND. BOLT
6	23235	LOCKING PLATE FOR OPER. TOP SEAL (1/2" BOLT)
	23415	LOCKING PLATE FOR OPER. TOP SEAL (5/8" BOLT)

plate must be inserted
 with slotted end "DOWN"



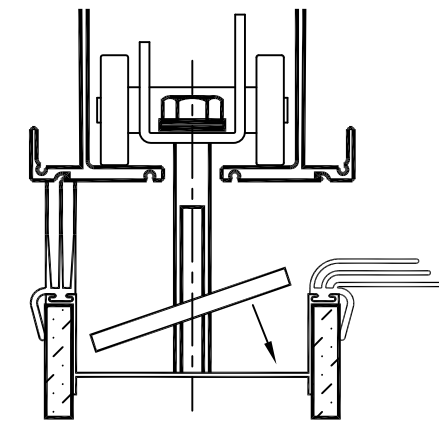
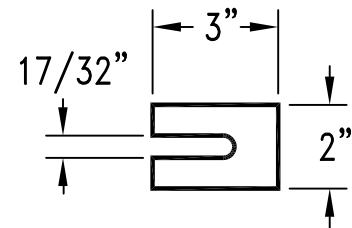
FOR 1/2" PEND. BOLT

1 PART # 22391

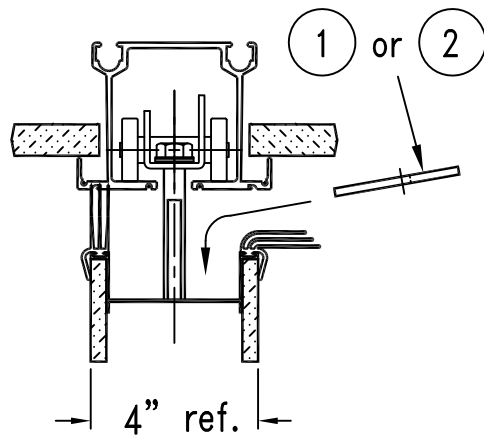


FOR 5/8" PEND. BOLT

2 PART # 22358

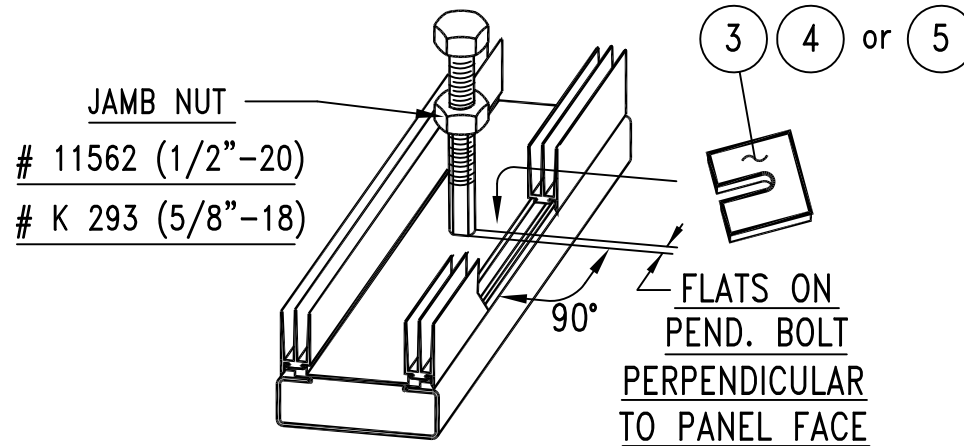


ENLARGED VIEW



SERIES 600

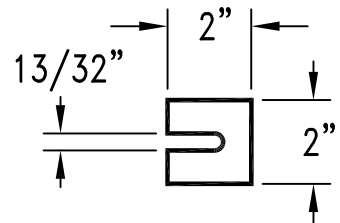
plate must be inserted
 with slotted end "DOWN"



FOR 1/2" PEND. BOLT

3 PART # 21974

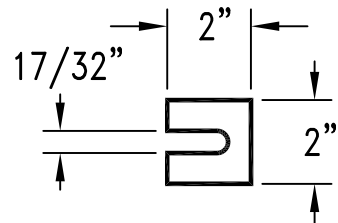
4" steel panel



FOR 5/8" PEND. BOLT

4 PART # 21975

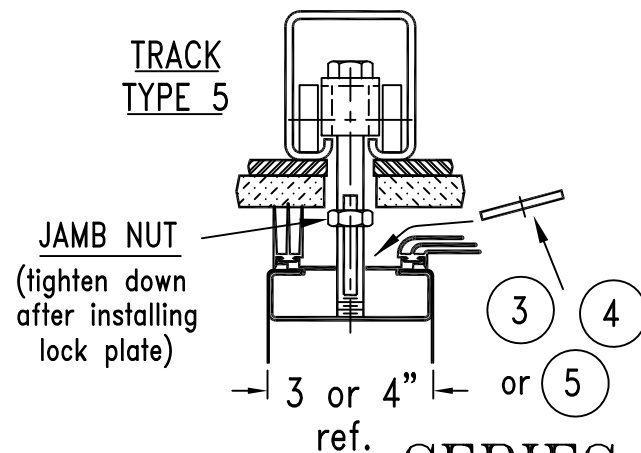
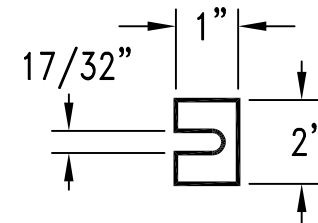
4" steel panel



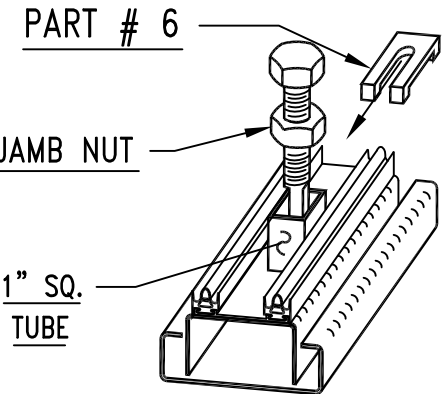
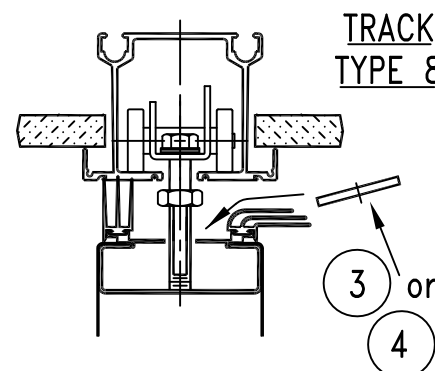
FOR 5/8" PEND. BOLT

5 PART # 23378

3" steel panel



SERIES 800 & 500

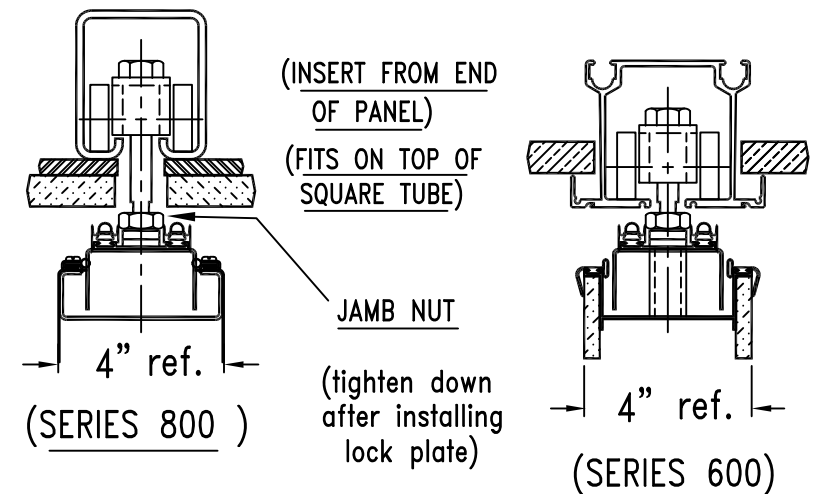


INSERT LOCKING
 PLATE FROM
 END OF PANEL

FLATS ON PEND.
 BOLT PARALLEL
 TO PANEL FACE

OPERABLE TOP SEALS (SERIES 800 SHOWN)

6 PART # 23235 (1/2" bolt)
 PART # 23415 (5/8" bolt)



OPERABLE TOP SEALS